


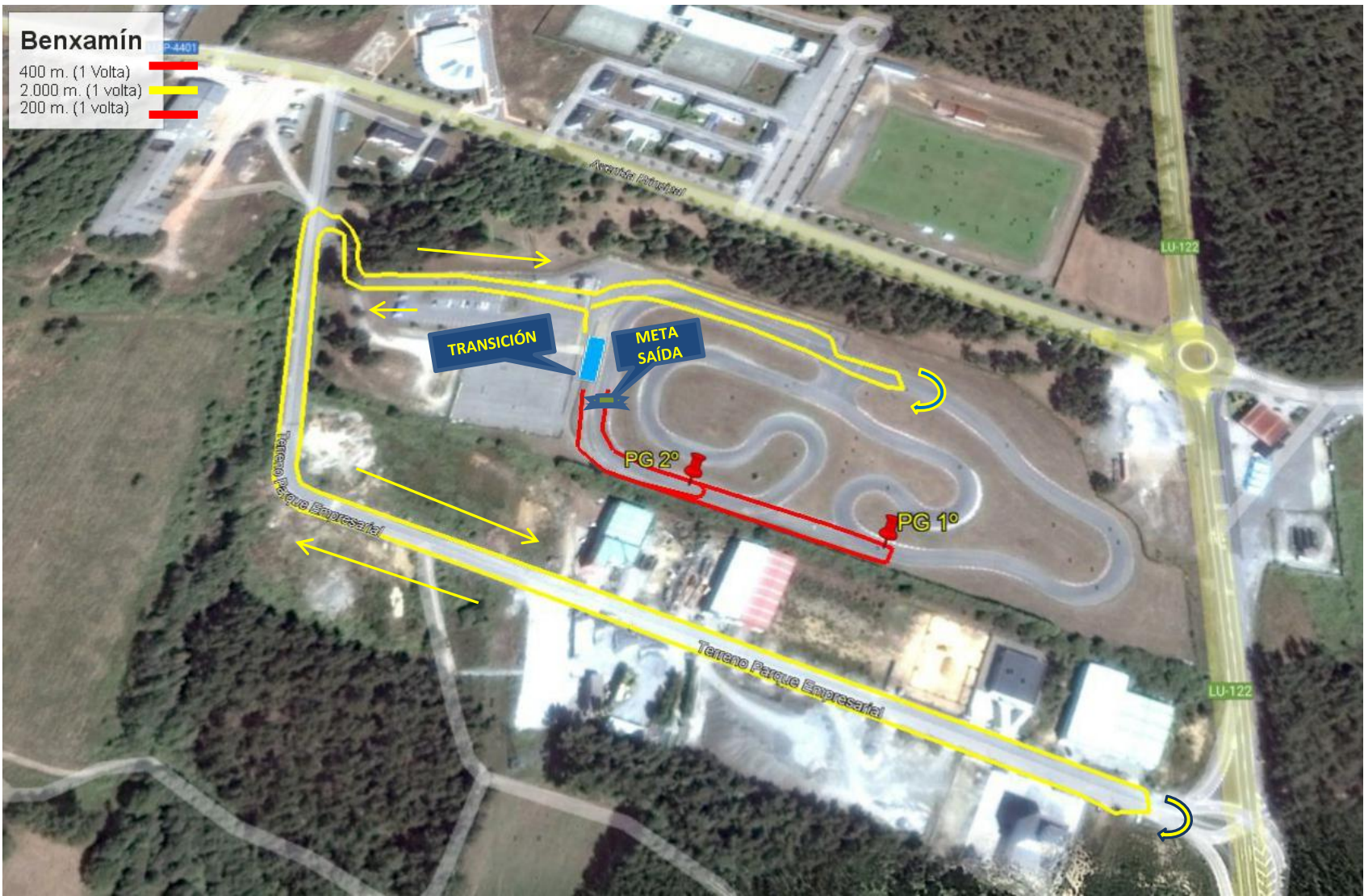


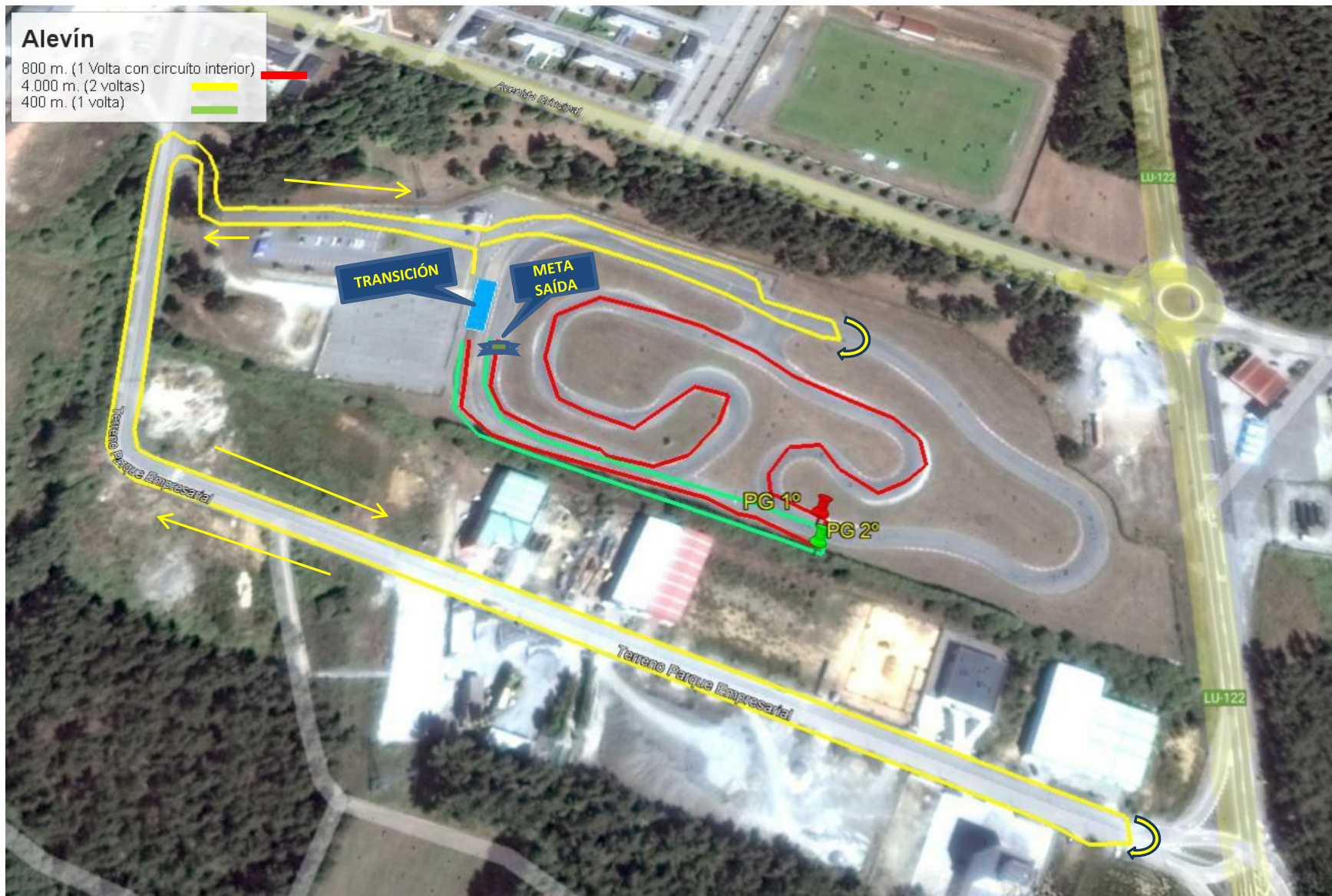
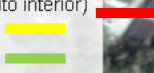
# Benjamín

- 400 m. (1 Volta) 
- 2.000 m. (1 volta) 
- 200 m. (1 volta) 



# Alevín

- 800 m. (1 Volta con circuito interior)
- 4.000 m. (2 voltas)
- 400 m. (1 volta)





**Infantil**  
1200 m. (1 Volta con circuito interior)  
6.000 m. (3 voltas)  
600 m. (1 volta)



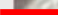
**TRANSICIÓN**


**META SAÍDA**


PG 1°

PG 2°

# Cadete

2000 m. (2 Voltas con circuito interior) 

8.000 m. (4 voltas) 

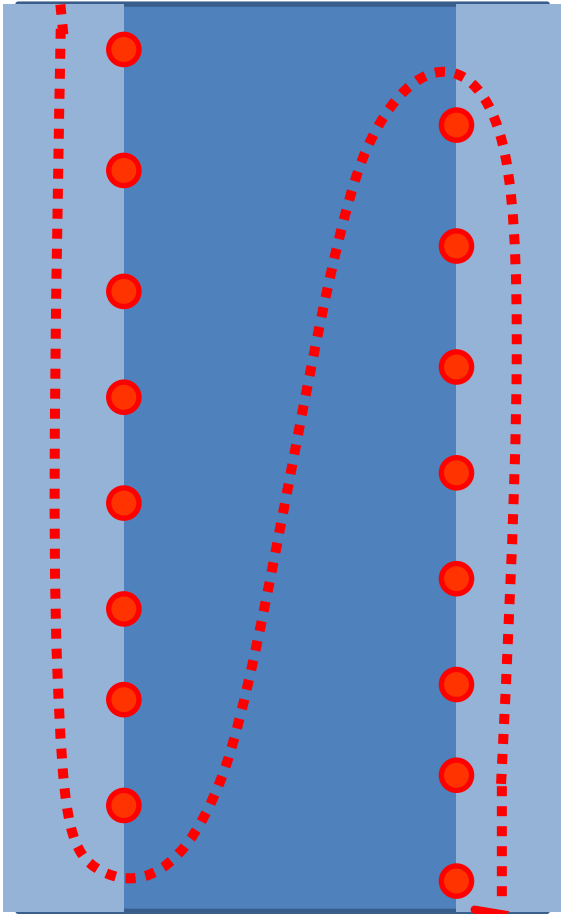
1000m. (1 volta con circuito interior) 





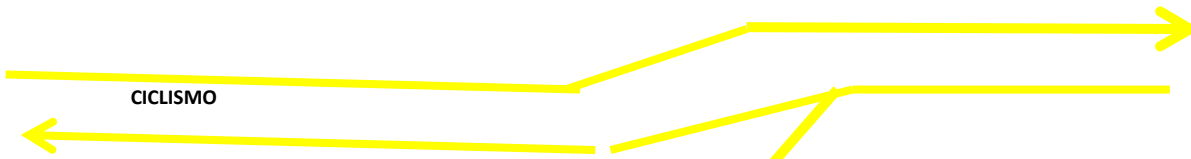
MONTAXE

TRANSICIÓN 1



SAÍDA  
META

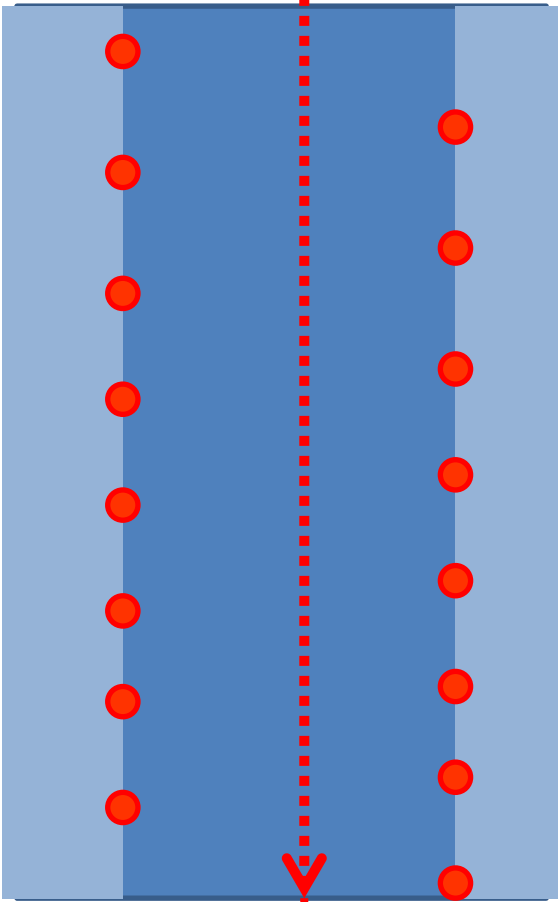




CICLISMO

DESMONTAXE

TRANSICIÓN 2



SAÍDA  
META